



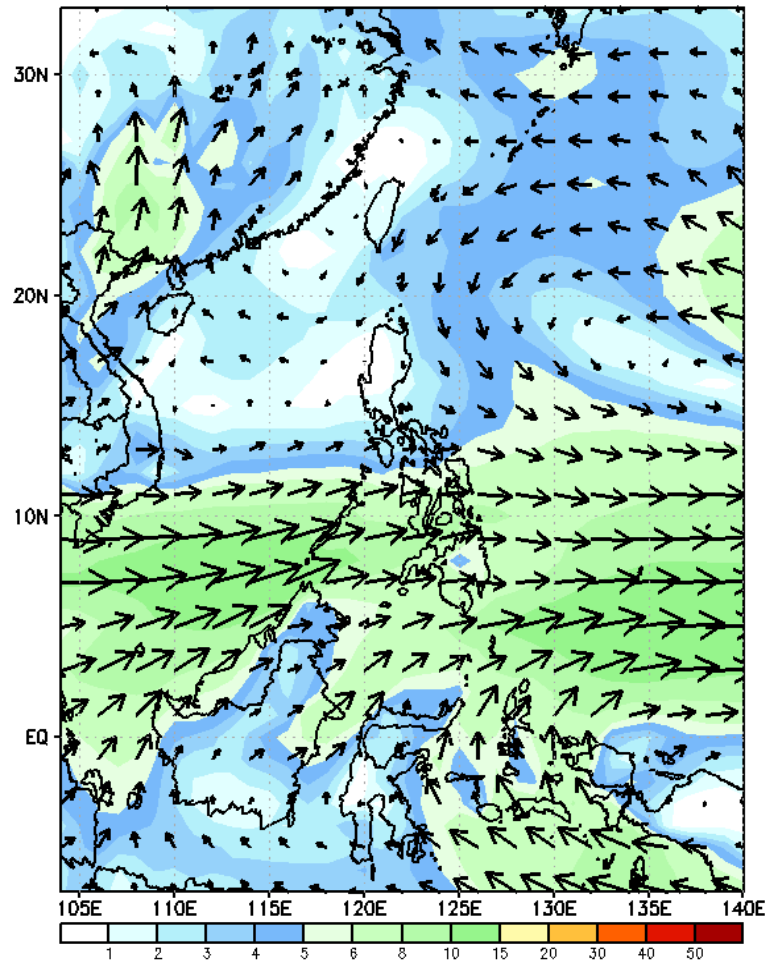
Week 1 & Week 2 Forecast for the Philippines using GEFS Model



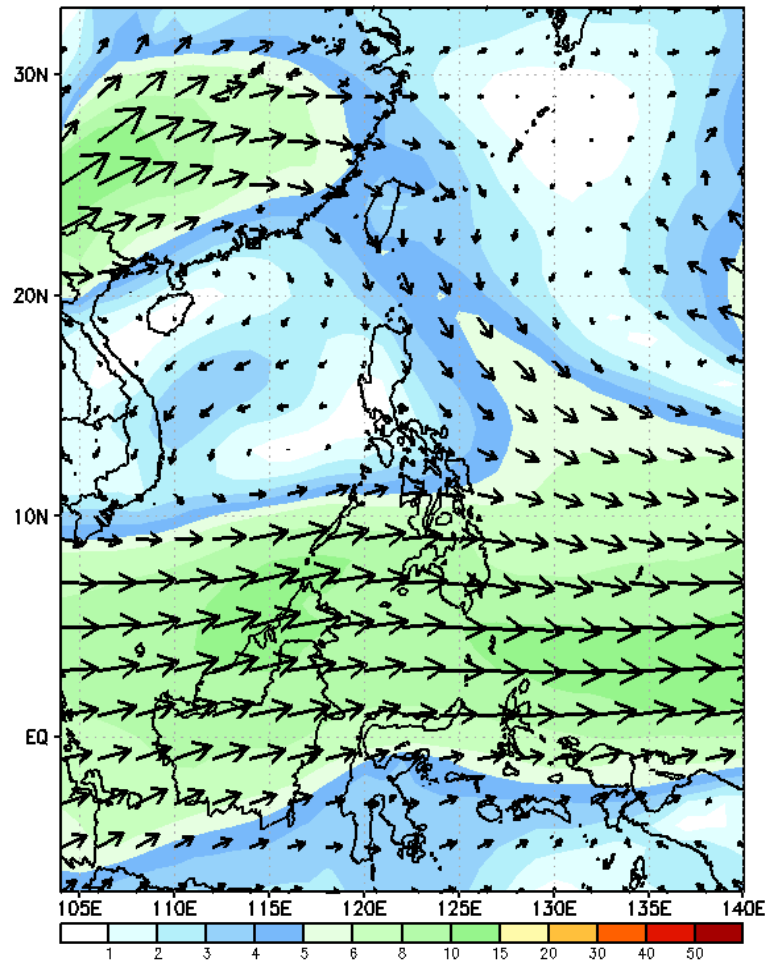
GEFS Week-1 Forecasts: Wind Forecast

Week 1: May 22-28, 2023

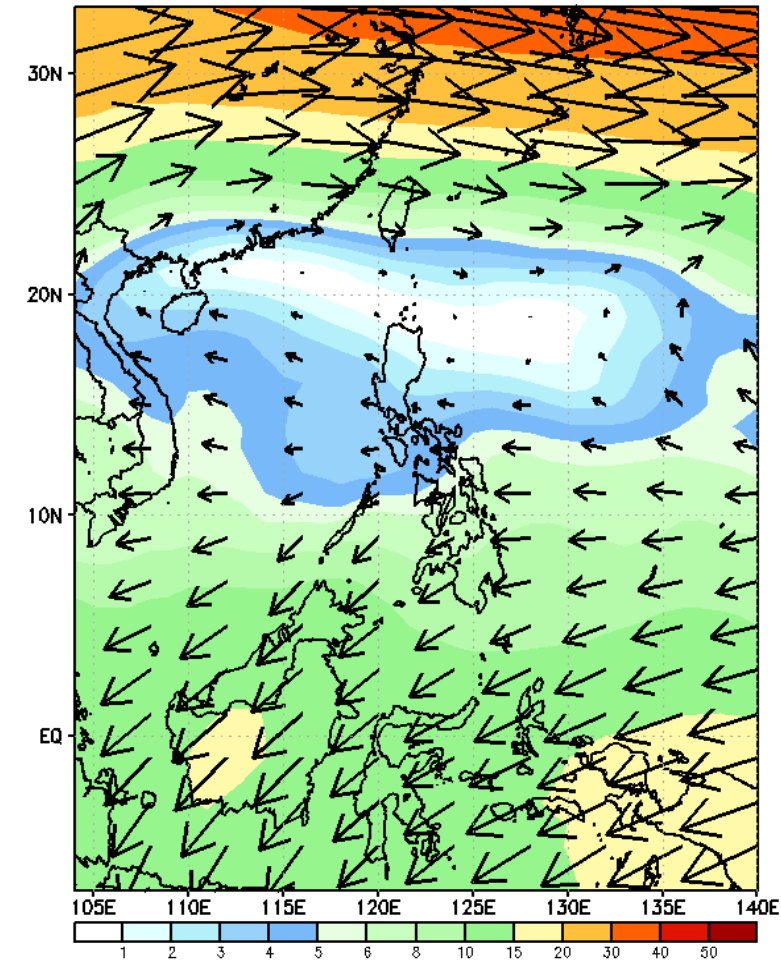
GEFS Week-1 850-hPa Wind Total
Valid: 20230522 - 20230528



GEFS Week-1 700-hPa Wind Total
Valid: 20230522 - 20230528

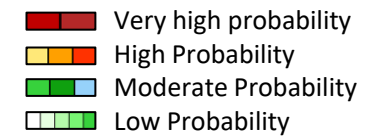


GEFS Week-1 200-hPa Wind Total
Valid: 20230522 - 20230528



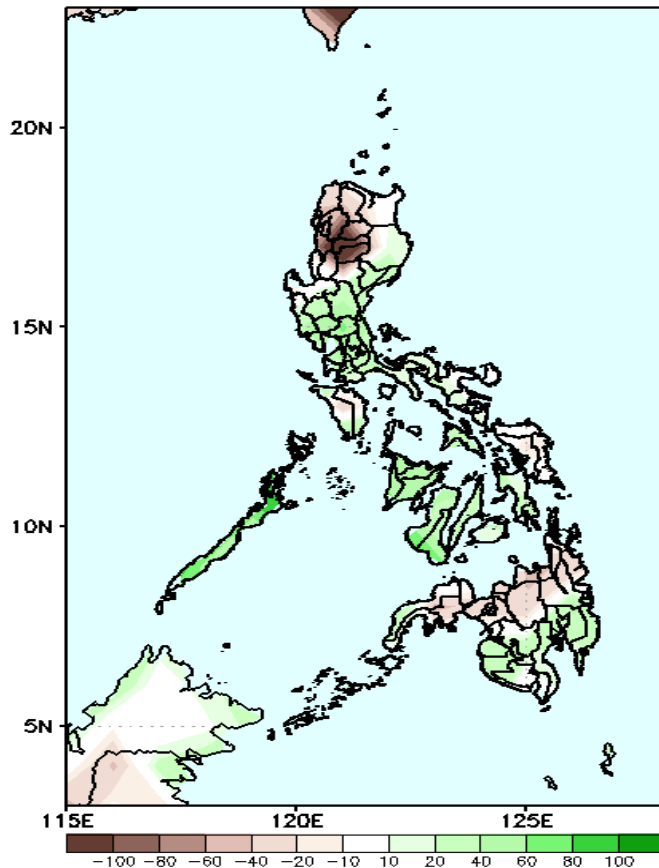
Westerly to northwesterly wind flow is forecasted to prevail in most parts of the country.

Precipitation Anomaly and Exceedance Probability > 25/50 mm



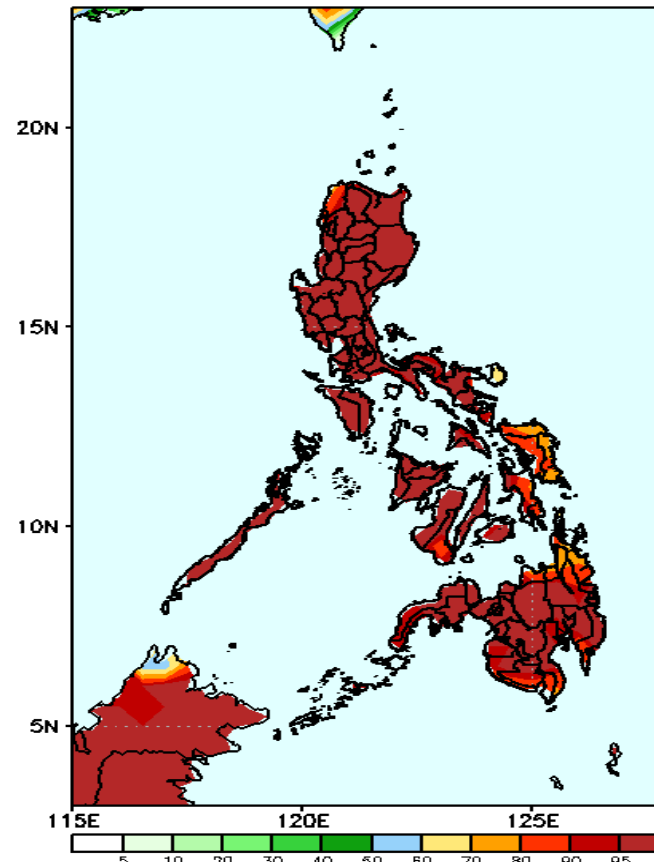
Week 1: May 22-28, 2023

GEFS Week-1 Precip Anomaly
Valid: 20230522 - 20230528



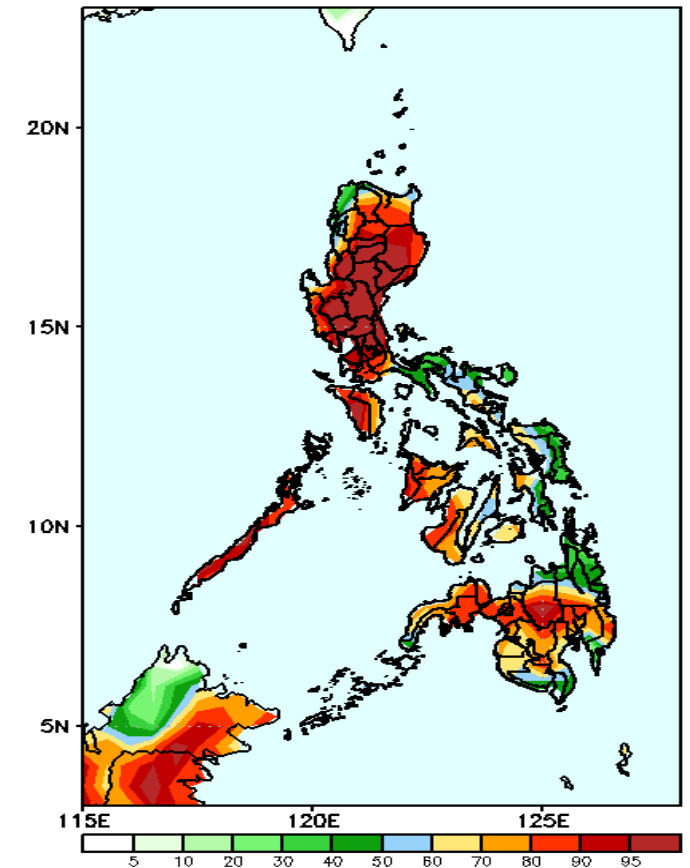
Rainfall deficit of more than 100mm is expected in Kalinga, Mt. Province, Ifugao, Abra & Ilocos Sur; 20-40mm in Samar provinces and northern Mindanao while 20-80mm increase of rainfall for the rest of the country.

GEFS Week-1 Exceedance Prob. > 25mm
Valid: 20230522 - 20230528



High to a very high probability to exceed 25mm of rainfall in most parts of the country.

GEFS Week-1 Exceedance Prob. > 50mm
Valid: 20230522 - 20230528

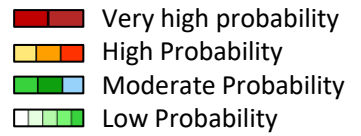


High to a very high probability to exceed 50mm of rainfall in most parts of the country while low to moderate in some parts of Bicol Region, Eastern Visayas and northeastern Mindanao.

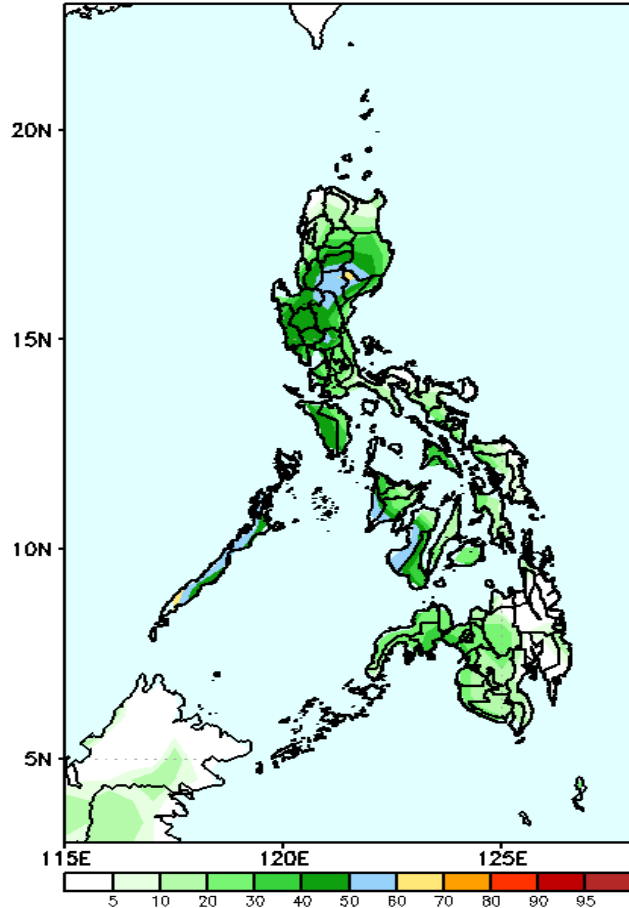


Exceedance Probability > 100/150/200 mm

Week 1: May 22-28, 2023

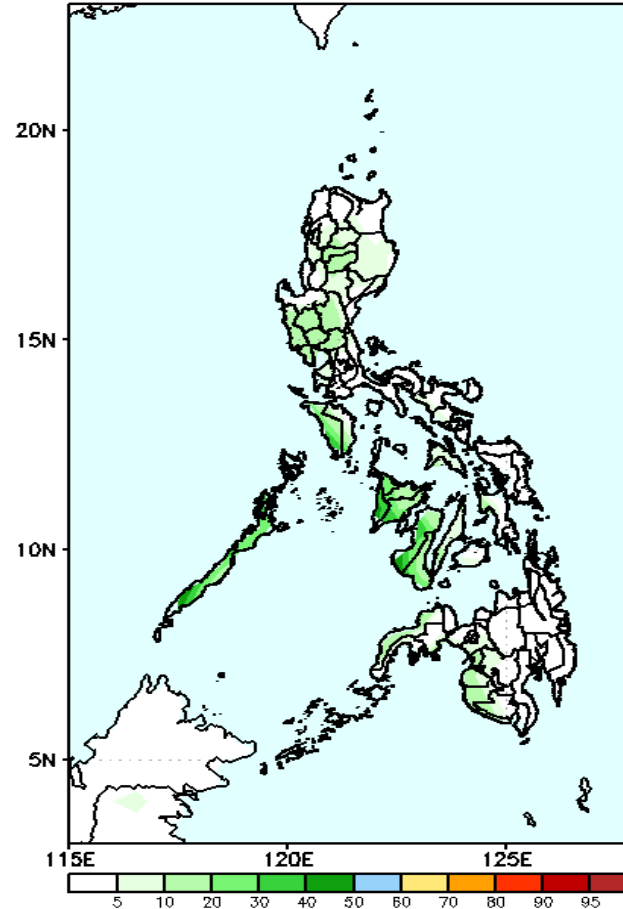


GEFS Week-1 Exceedance Prob. > 100mm
Valid: 20230522 - 20230528



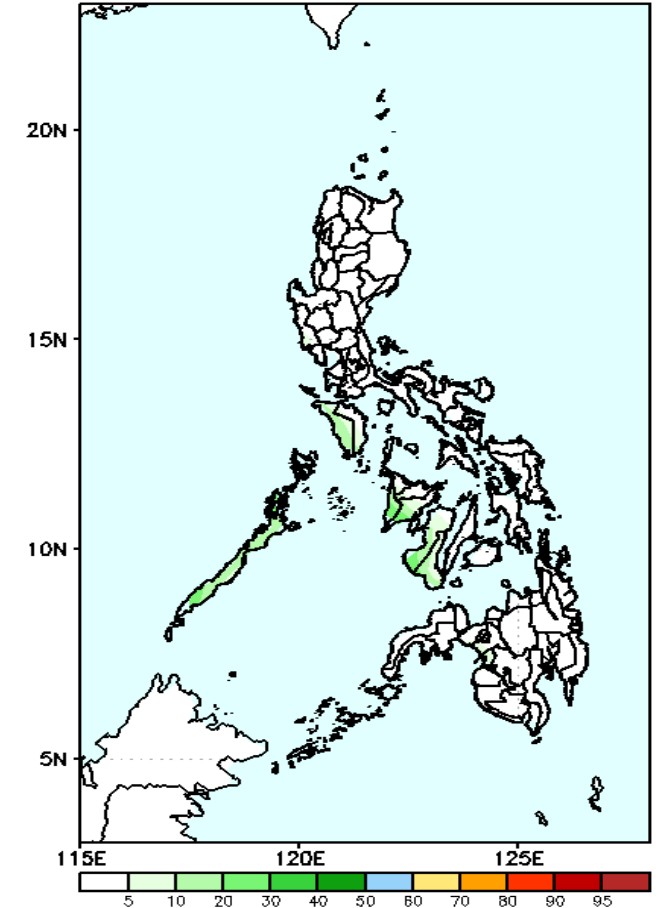
Moderate probability to exceed 100mm of rainfall in portions of Central Luzon, Nueva Vizcaya and Western Visayas while low likelihood for the rest of the country.

GEFS Week-1 Exceedance Prob. > 150mm
Valid: 20230522 - 20230528



Low probability of rainfall to exceed 150mm in most parts of the country during the forecast period.

GEFS Week-1 Exceedance Prob. > 200mm
Valid: 20230522 - 20230528

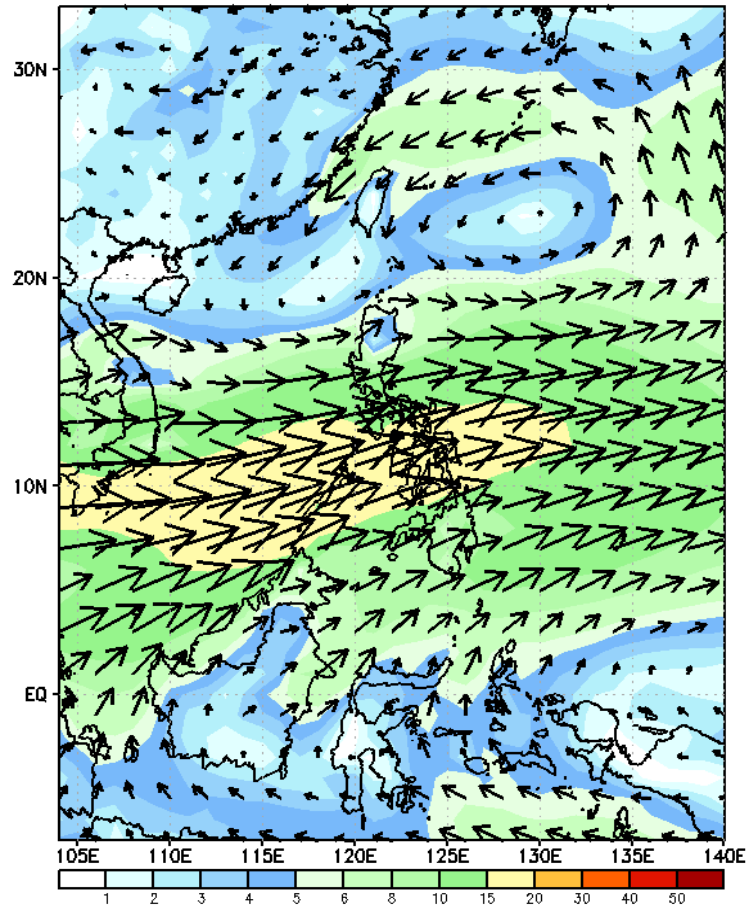


Low probability of rainfall to exceed 200mm in most parts of the country during the forecast period.

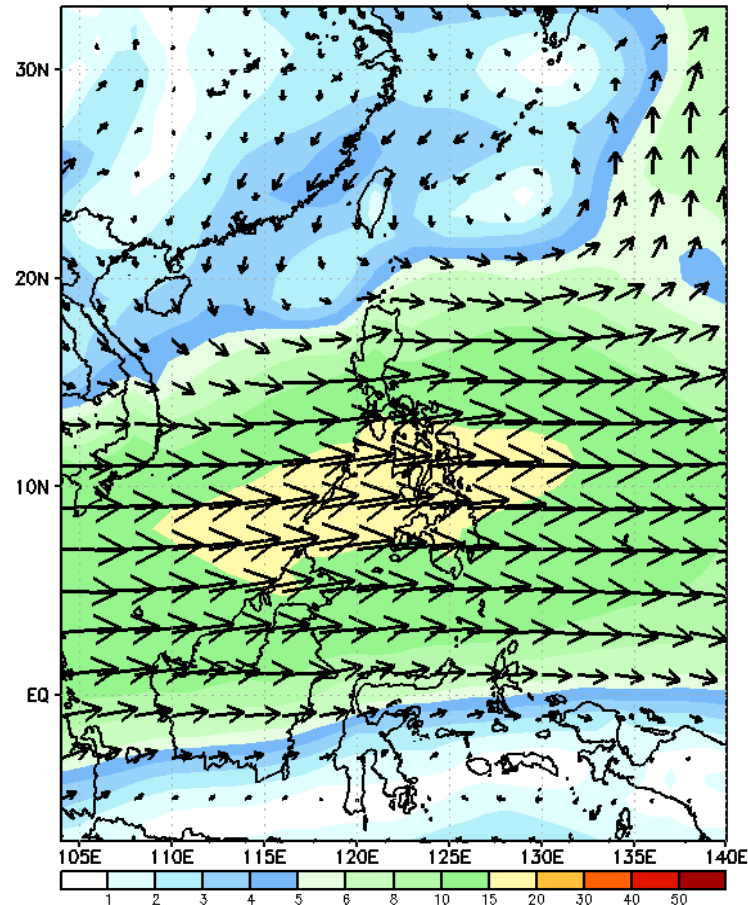
GEFS Week-2 Forecasts: Wind Forecast

Week 2: May 29- June 04, 2023

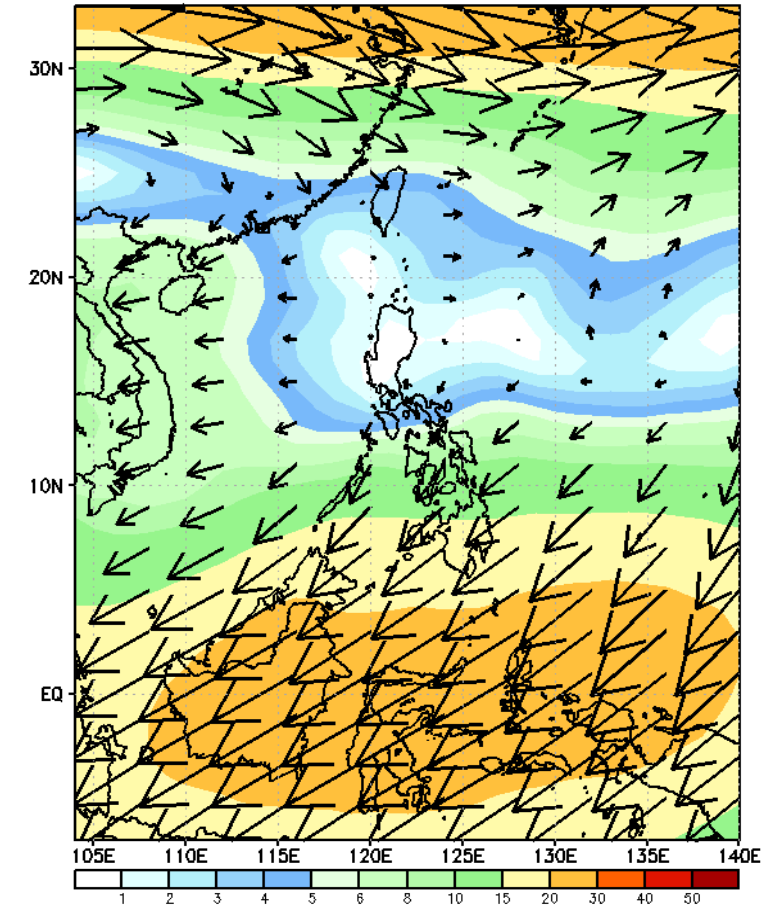
GEFS Week-2 850-hPa Wind Total
Valid: 20230529 - 20230604



GEFS Week-2 700-hPa Wind Total
Valid: 20230529 - 20230604

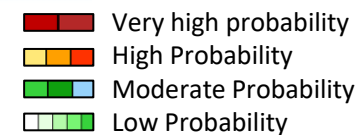


GEFS Week-2 200-hPa Wind Total
Valid: 20230529 - 20230604



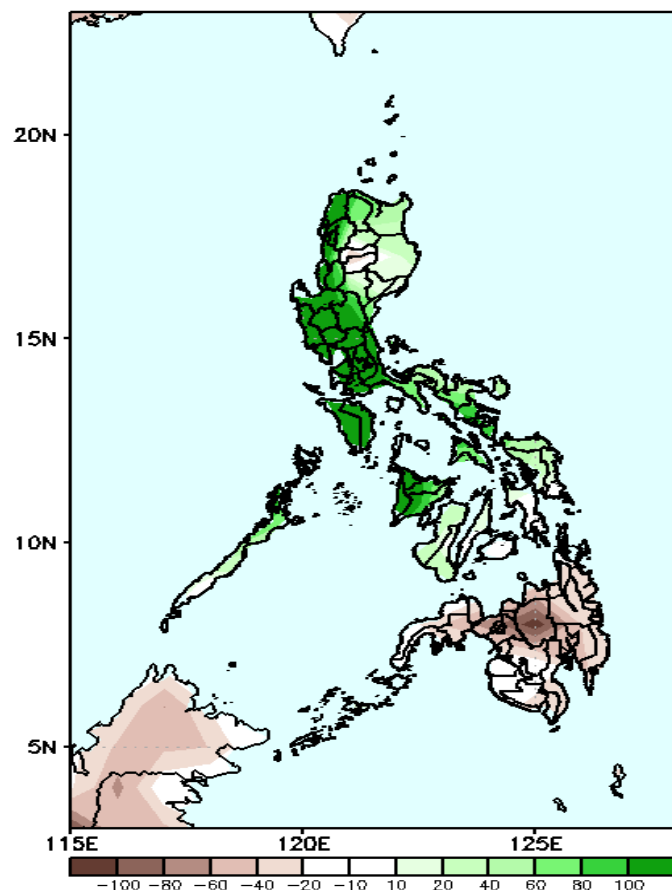
South Westerly wind flow is forecasted to prevail in most parts of the country.

Precipitation Anomaly and Exceedance Probability > 25/50 mm



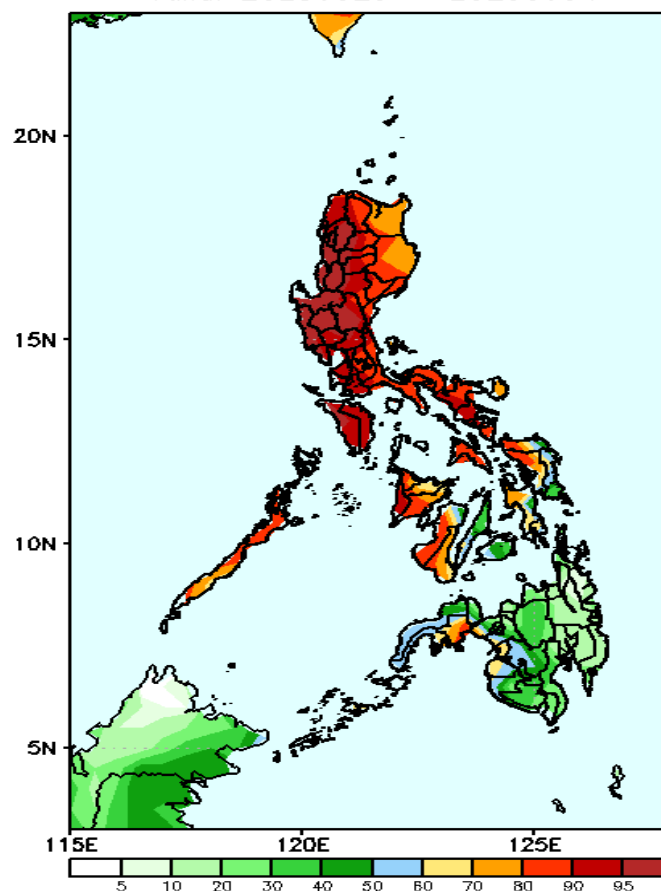
Week 2: May 29- June 04, 2023

GEFS Week-2 Precip Anomaly
Valid: 20230529 - 20230604



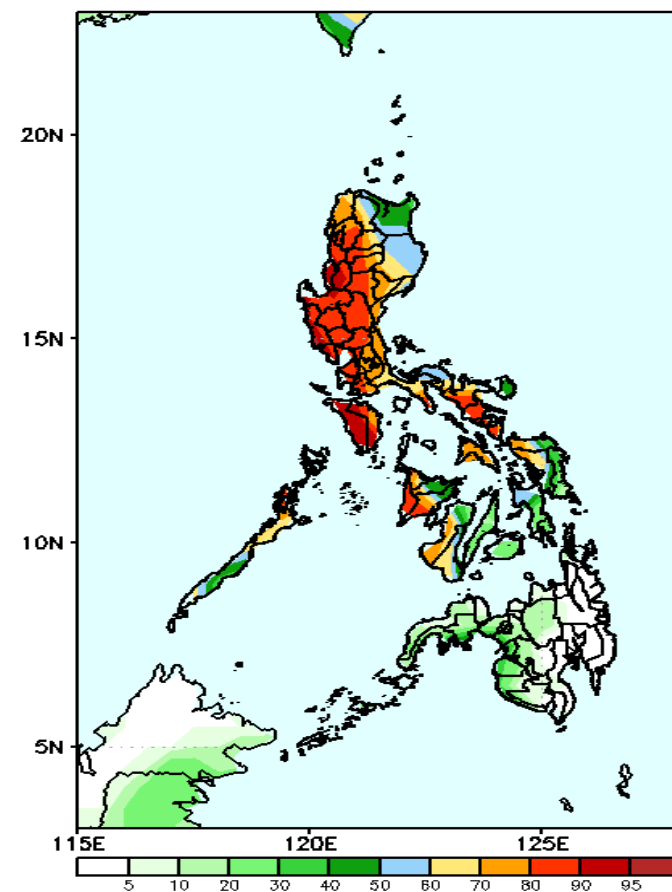
Rainfall increase of more than 100mm is expected in most parts of eastern, Central and Southern Luzon and Panay Island; 20-60mm in Cagayan Valley and the rest of Visayas while rainfall deficit of 20-80mm is more likely in Mindanao.

GEFS Week-2 Exceedance Prob. > 25mm
Valid: 20230529 - 20230604



High to a very high probability to exceed 25mm of rainfall in most parts of Luzon and Western Visayas, moderate to high probability for the rest of Visayas and Zamboanga Peninsula while low to moderate probability for the rest of the country.

GEFS Week-2 Exceedance Prob. > 50mm
Valid: 20230529 - 20230604



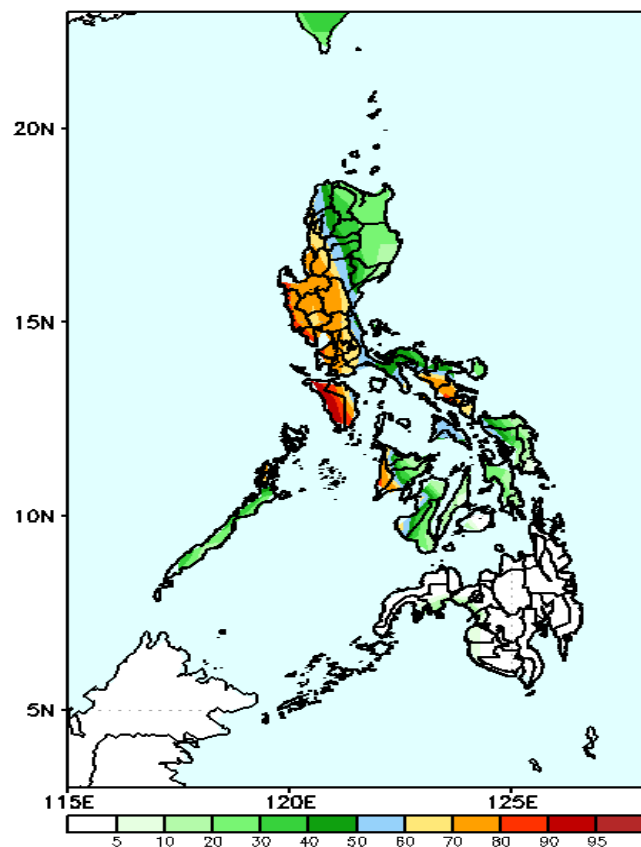
High to very high probability to exceed 50mm of rainfall in most parts of Luzon, moderate to high probability in Western Visayas and some portions of Eastern Visayas while low probability for the rest of Visayas and Mindanao.

Exceedance Probability > 100/150/200 mm

Week 2: May 29- June 04, 2023

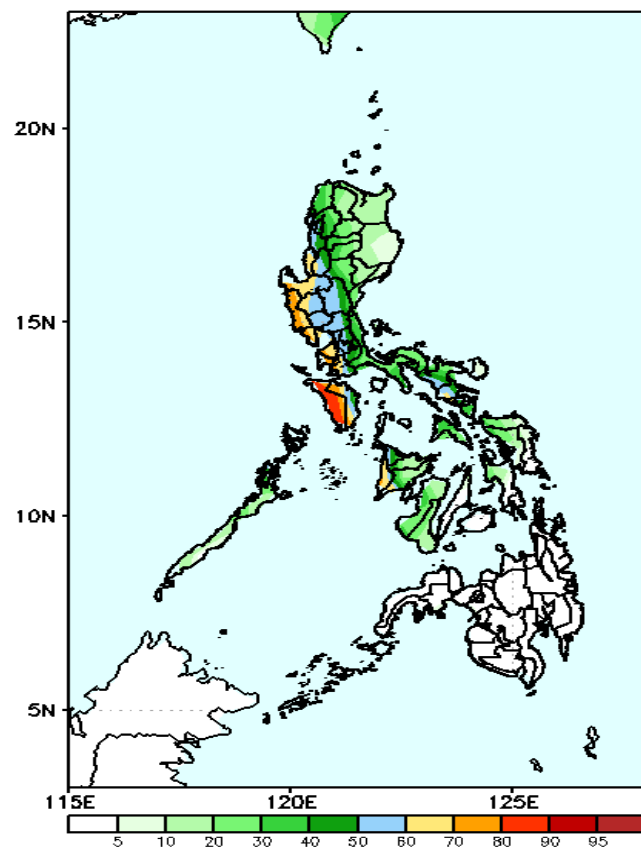
- Very high probability
- High Probability
- Moderate Probability
- Low Probability

GEFS Week-2 Exceedance Prob. > 100mm
Valid: 20230529 - 20230604



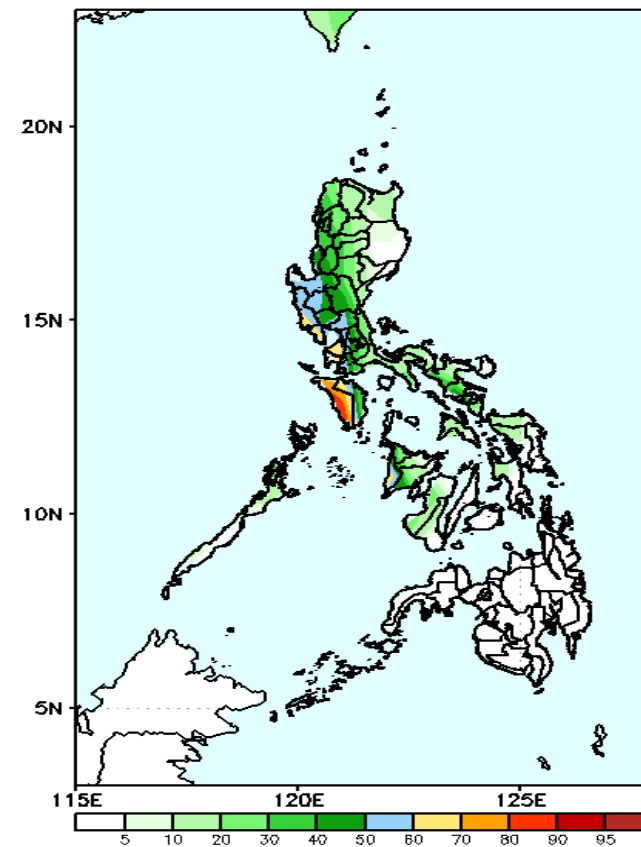
Moderate to high probability to exceed 100mm of rainfall in most parts of Luzon and Western Visayas while low to moderate probability for rest of the country.

GEFS Week-2 Exceedance Prob. > 150mm
Valid: 20230529 - 20230604



Moderate to a high probability to exceed 150mm of rainfall in most parts of Western and Central Luzon and Antique while low probability for rest of the country.

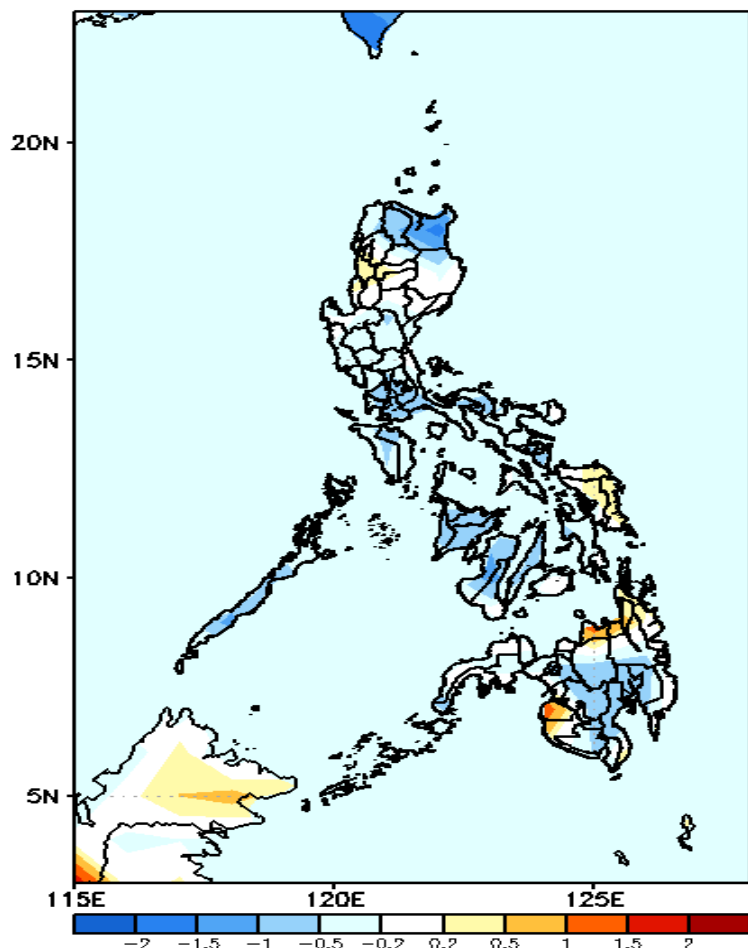
GEFS Week-2 Exceedance Prob. > 200mm
Valid: 20230529 - 20230604



Moderate to a high probability to exceed 200mm of rainfall in most parts of Western and Central Luzon and Antique while low probability for rest of the country.

GEFS Week-1 & 2 Forecasts: T2m Anomaly

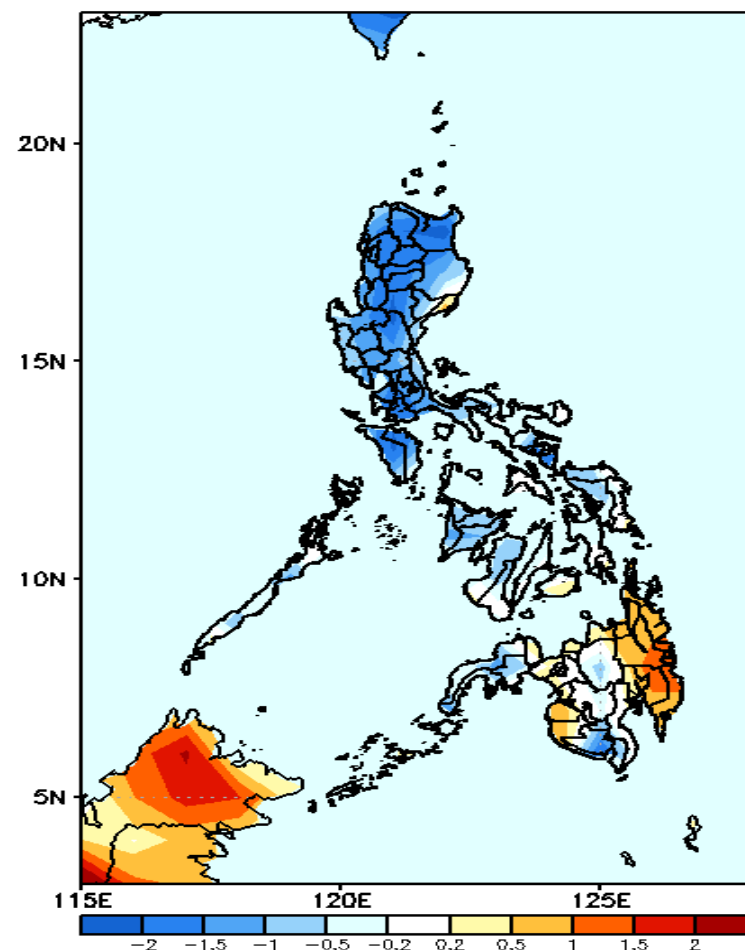
GEFS Week-1 T2m Anomaly
Valid: 20230522 - 20230528



2m Temperature Week 1: May 22-28, 2023

Average to slightly cooler surface air temperature will likely experience in most parts of the country except in Misamis Oriental and Maguindanao where warmer than average temperature will likely have during the forecast period.

GEFS Week-2 T2m Anomaly
Valid: 20230529 - 20230604



2m Temperature Week 2: May 29- June 04, 2023

Cooler than average surface air temperature will likely experience in Luzon and south Cotabato; average to slightly cooler in Visayas and most parts of western Mindanao (including Zamboanga Peninsula) while eastern Mindanao, Maguindanao and Sultan Kudarat will likely have slightly warmer to warmer than average temperature.